

## MYCETCOLOR

**MYCETCOLOR** is able to dissociate components of samples of skin, hair and nails. This Congo red based reagent also stain mycelium filaments or spores in red or pink for direct microscopic examination of sample.

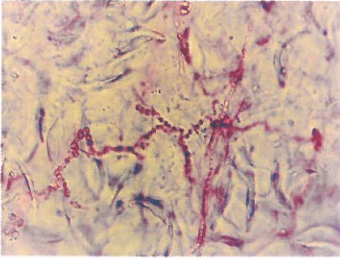


Fig 1 : Microscopic observation (with white light) of skin samples treated with MYCETCOLOR

**MYCETCOLOR**  
60 tests  
Ref. Mycol60

## MYCETFLUO

**MYCETFLUO** is able to dissociate components of samples of skin, hair and nails. This reagent also stains mycelium filaments or spores for direct fluorescent microscopic examination of sample. Fungal elements (mycelium filament, spores...) appear in green or blue fluorescence according to the filter used.

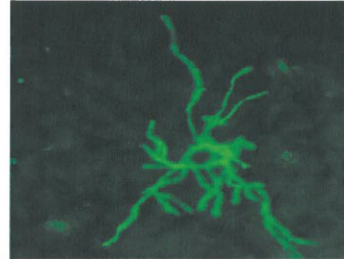


Fig 2 : Microscopic observation (with fluorescent light) of nails samples treated with MYCETFLUO

**MYCETFLUO**  
60 tests  
Ref. Myflu60

### In comparison with the use of reagents such as KOH, chlorolactophenol to dissociate components of samples, **MYCETCOLOR** and **MYCETFLUO** :

- ✓ Ready-to-use, easy-to-use and stable
- ✓ Stain fungal elements and ensure an easy and a rapide microscopic finding (5 to 10 minutes)
- ✓ Good contrast between stained fungal elements and cells of a sample
- ✓ Require no ventilated storage cabinet
- ✓ Contain no corrosive elements which may attack microscope lens and stage
- ✓ Allow to save time and improve the sensitivity of direct examination
- ✓ CE marked

New product

## MYCETBLUE

**MYCETBLUE** is able to stain in blue fungal elements from a colony, obtained after a culture on Sabouraud medium or a subculture on Borelli medium.

**MYCETBLUE**  
2 droppers of 2 mL  
Ref. Myblu4



Fig 3 : Microscopic observation (with white light) of fungal colonies (*Microsporum canis*) stained with MYCETBLUE

- ✓ Ready-to-use, easy-to-use and stable
- ✓ Ensures an easy and a rapid finding of fungal elements allowing the identification of dermatophytes
- ✓ Requires no ventilated storage cabinet
- ✓ CE marked

## BORELLI MEDIUM

**BORELLI MEDIUM** is a convenient method for identification of dermatophytes previously cultured on media such as Sabouraud. Observation of sporulation and pigmentation during culture from isolated fungi placed on BORELLI medium allows identification of species.

**BORELLI MEDIUM**  
4 bottles of 50 mL (about 20 tests)  
Ref. Borellf20  
or  
18 tubes of 10 mL (18 tests)  
Ref. Borellt18



Fig 4 : Observation of *Trichophyton rubrum* subculture on BORELLI medium after incubation at +20° C to +25° C for 11 days.

- ✓ Unique ready-to-use, easy-to-use and stable identification medium specific of dermatophytes cultures
- ✓ Enhance sporulation of dermatophytes and stimulate pigment production for a correct identification
- ✓ Requires no ventilated storage cabinet
- ✓ CE marked